



Existing titoki tree to be retained

Communal bin storage

Bike storage

Existing puriri tree to be retained

- Specimen trees
- Fruiting trees
- Narrow feature trees
- Hedging
- Ground cover planting
- Contained strip planting
- Embankment planting
- Native climber planting
- Standard concrete
- Exposed aggregate concrete
- Lawn
- Artificial turf
- Storage shed
- Folding clothesline
- Wheelie bins
- Fencing < 1.2m
- Fencing > 1.2m
- Gates

Code	Name	Common Name	PB	Spacing	Quantity
AE	<i>Alectryon excelsus</i>	titoki		95' As 1/4" dia	5
RS	<i>Rhoplostylis sapida</i>	nikau		95' As 1/4" dia	13
LE	<i>Citrus x limon</i>	lemon		18' As 1/4" dia	2
MA	<i>Corax x tarumanga</i>	lemon		18' As 1/4" dia	1
LE	<i>Corax x tarumanga</i>	lemon		18' As 1/4" dia	1
LE	<i>Acacia salicina</i>	lemon		18' As 1/4" dia	5
CB	<i>Corokia buxifolia</i>	korokio taranga		5' 800mm	72
GC	<b>Ground Cover Planting</b>				
	<i>Lobelia angulata</i>	panakenake		3' 900mm	36
	<i>Muehlenbeckia axillaris</i>	pohuphue		3' 900mm	36
CS	<b>Contained Strip Planting</b>				
	<i>Muehlenbeckia axillaris</i>	mountain ashella		5' 500mm	261
	<i>Azara salicaria</i>	orange carax		3' 500mm	261
EM	<b>Existing Planting</b>				
	<i>Corax x tarumanga</i>	lemon		18' As 1/4" dia	5
	<i>Phormium tenax</i>	manuka oia ioe		5' 750mm	56
	<i>Phormium tenax</i>	wharariri		3' 750mm	56
NC	<b>Native Climber Planting</b>				
	<i>Muehlenbeckia complexa</i>	pohuphue		5' 1000mm	30
	<i>Passiflora tetrandra</i>	kohe		5' 1000mm	30
EX1	Existing native street tree to be retained				
EX2	Existing non native tree to be retained				



*Rhoplostylis sapida*



*Corokia buxifolia*



*Chionochloa filicorns*



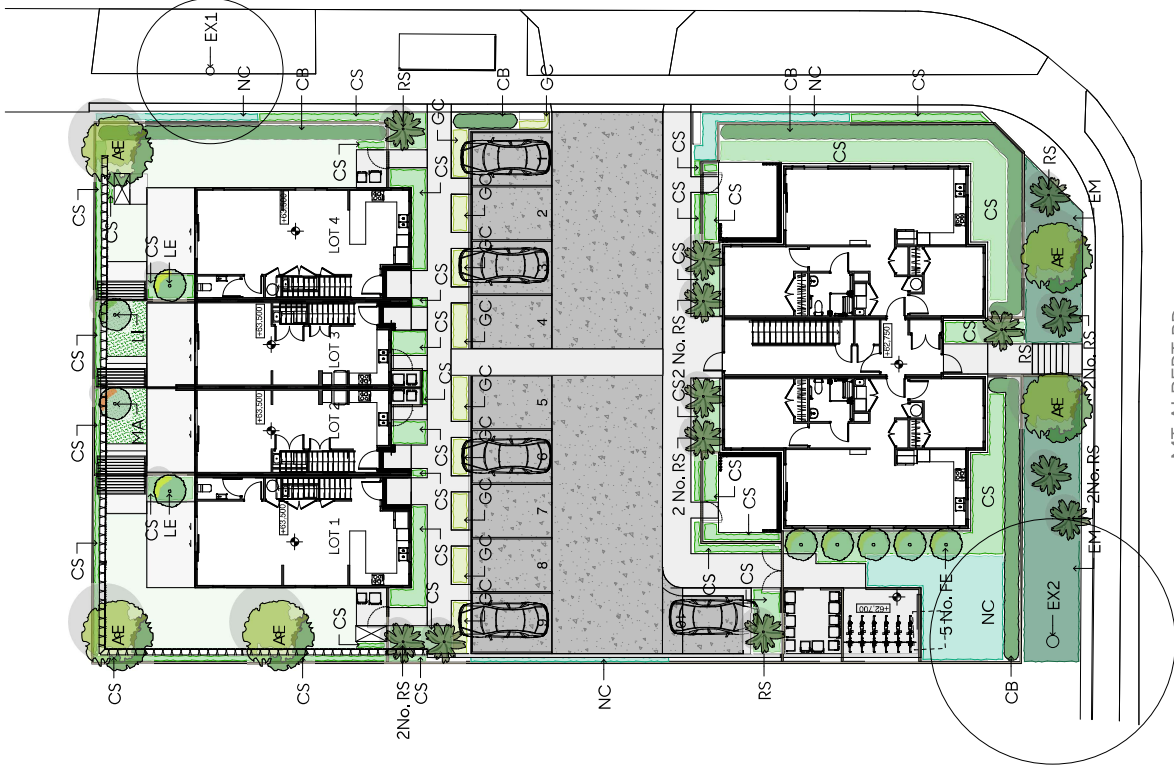
*Alectryon excelsus*



*Citrus x limon*



*Lobelia angulata*



BUCKLEY RD

MT ALBERT RD

## FRUIT TREES



Citrus x limon



Citrus x aurantiifolia



Citrus reticulata

## FRUIT HEDGE



Acca sellowiana

## GROUND COVER MIX



Lobelia angulata



Muehlenbeckia axillaris

## HEDGE PLANTING



Corakia buxifolioides

## CONTAINED STRIP PLANTING



Astelia nervosa



Carex testacea

## EMBANKMENT PLANTING

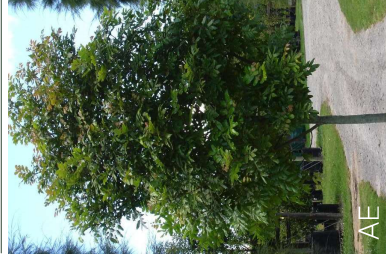


Chionochloa flavicans



Phormium cookianum

## SPECIMEN TREES

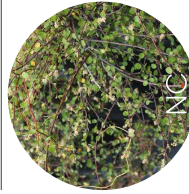


Alcyon excelsus

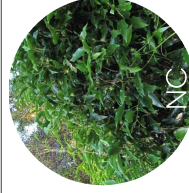


Ropobostylis sapida

## NATIVE CLIMBER PLANTING



Muehlenbeckia complexa



Passiflora tetrandra

Code	Name	Common Name	PB	Spacing	Quantity
AE	Alcyon excelsus	titoki	95 As	18x18m	5
RS	Ropobostylis sapida	nikau	95 As	18x18m	13
LE	Citrus x limon	lemon	18 As	18x18m	2
LI	Citrus x aurantiifolia	li	18 As	18x18m	1
MA	Citrus reticulata	mandarin	18 As	18x18m	1
FE	Acca sellowiana	fruit hedge	18 As	18x18m	5
CB	Corakia buxifolioides	korokio taranga	5	800mm	72
GC	Ground Cover Planting				
50%	Lobelia angulata	parakemake	3	900mm	36
50%	Muehlenbeckia axillaris	pohuehue	3	900mm	36
CS	Contained Strip Planting				
50%	Astelia nervosa	maunatahi astelia	5	500mm	261
50%	Carex testacea	orange carex	3	500mm	261
EM	Embarkment Planting				
50%	Chionochloa flavicans	meacura oae ioe	5	750mm	56
50%	Phormium cookianum	wharariri	3	750mm	56
NC	Native Climber Planting				
50%	Muehlenbeckia complexa	pohuehue	5	1,000mm	30
50%	Passiflora tetrandra	kohe	5	1,000mm	30
EX1	Existing native street tree to be retained				
EX2	Existing non native tree to be retained				